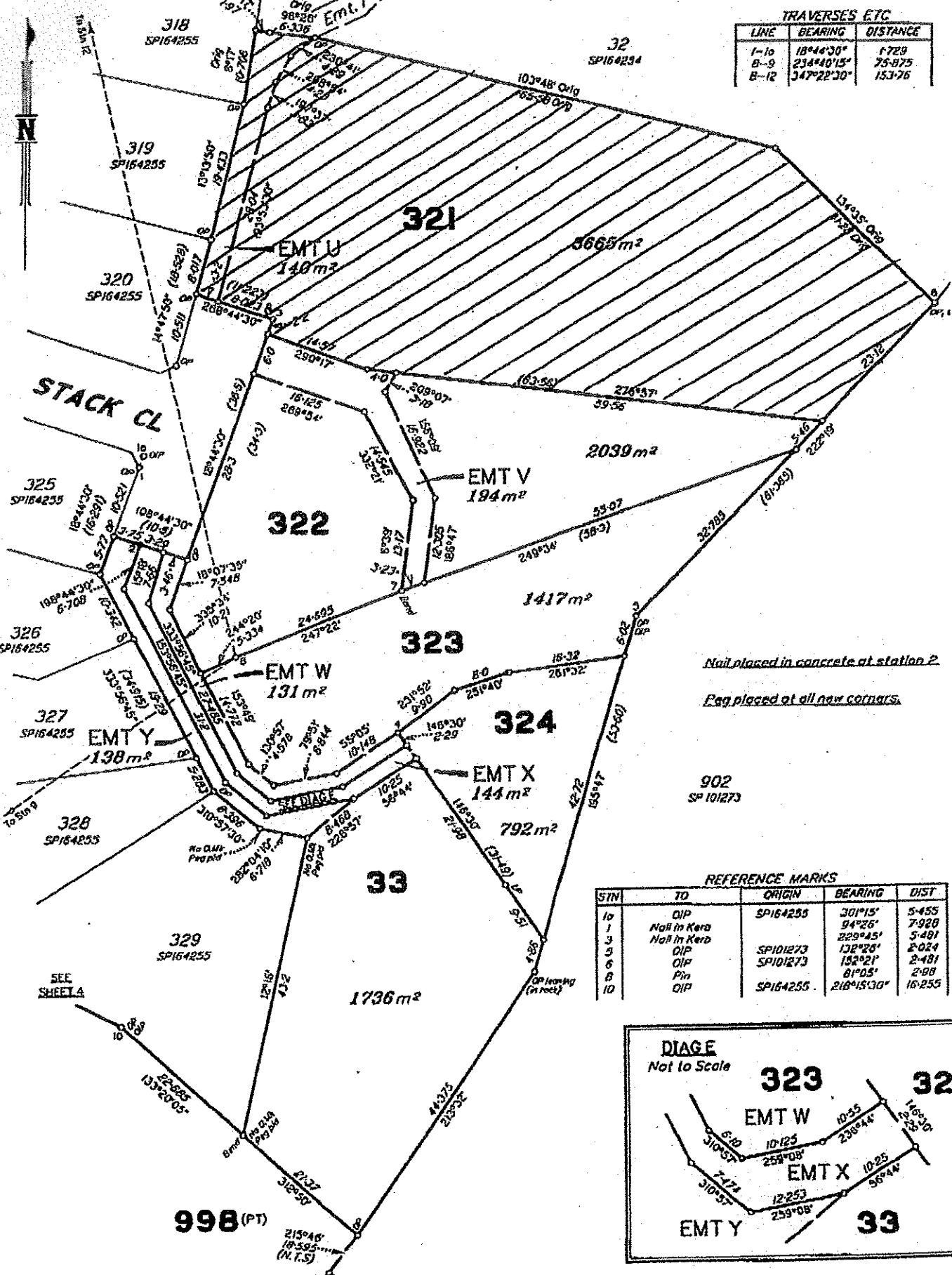


TRAVERSES ETC

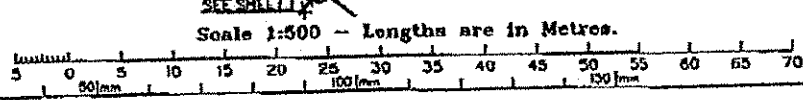
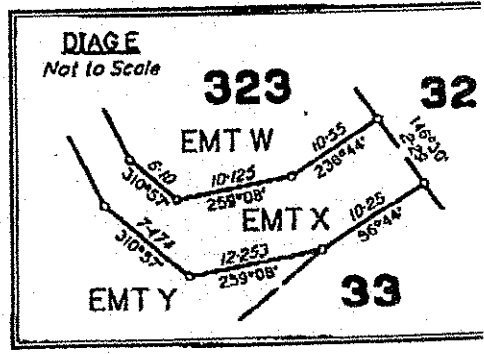
LINE	BEARING	DISTANCE
1-10	18°44'30"	1729
8-9	234°40'15"	75-875
8-12	347°22'30"	153-76



Nail placed in concrete at station P.
Peg placed at all new corners.

REFERENCE MARKS

STN	TD	ORIGIN	BEARING	DIST
10	DIP	SP164255	301°15'	5-455
1	Nail in Kerb		94°26'	7-928
3	Nail in Kerb		229°45'	5-481
5	DIP	SP101273	132°28'	2-024
6	DIP	SP101273	152°21'	2-481
8	Pin		81°05'	2-98
10	DIP	SP164255	218°15'30"	16-255



State copyright res
Insert Plan Number **SP178253**

W.P. CP